



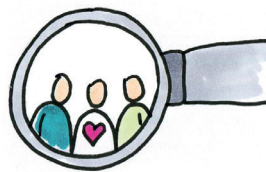
With the support of



*If you have questions  
we are happy  
to advise you further!*

**CONTACT**

**German Association  
for Palliative Medicine**  
Aachener Straße 5 | 10713 Berlin  
Tel 030 / 30 10 100 0  
dgp@palliativmedizin.de  
www.palliativmedizin.de



*Your donation  
really helps*

**BANK ACCOUNT  
FOR DONATIONS**

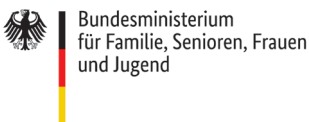
**German Association  
for Palliative Medicine**  
Berliner Volksbank  
IBAN:DE 1910 0900 0023 7481 1021  
BIC: BEVODEBBXXX

**Everybody has the right  
to die with dignity.**

**Help us  
to create better conditions  
for terminally ill people!**

**Online donations at**  
www.palliativmedizin.de

Gefördert vom:



Layout www.meira.de  
Illustrations Designed by Freepik

State February 2023

*Are you  
seeking advice  
on terminal illness?*



*Find services  
and addresses  
in your area here.*

*Available  
in 10 languages*

*German | English | French | Turkish | Polish |  
Romanian | Russian | Vietnamese | Arabic | Ukrainian*

**WWW.WEGWEISER-HOSPIZ-  
PALLIATIVMEDIZIN.DE**

## GUIDE

### *to Hospice and Palliative Care in Germany*

More than 3,000 hospice and palliative care services across the country can be found on an online portal:

- Includes addresses in your area
- Quick access by means of “Close To” search
- Free to users and providers
- Services for children, young people and adults
- Regularly updated
- Information in a total of 10 languages



1

Are you seeking advice on terminal illness?  
For yourself, for relatives,  
for friends or acquaintances?

2

We're here to help.  
Simply log on at  
[www.wegweiser-hospiz-palliativmedizin.de](http://www.wegweiser-hospiz-palliativmedizin.de)

3

You can find contacts and competent support in your area here immediately and free of charge!





DEUTSCHE GESELLSCHAFT  
FÜR PALLIATIVMEDIZIN

The German Association for Palliative Medicine combines scientific knowledge and human connection: more than 6,000 members are committed to „hand in hand“ care, which is what many people want for their last days of life, whilst remaining in the midst of life and in the community. With as little pain, fear and suffering as possible. Where you feel well cared for.

The German Association for Palliative Medicine has been working consequently since 1994 to help improve the quality of life of seriously ill and dying people in Germany. From the very beginning, this included the creation and continuous updating of an address directory, later this became an online database.

The “**Guide to Hospice and Palliative Care in Germany**”, with its more than 3,000 addresses, is updated constantly so that people who are seeking advice can find experienced doctors, teams, hospices, services and palliative care units in their area “just a few clicks away”.

The families of terminally ill **children, young people and young adults** can find contact points and services for this age group in a special section.

All the information in the guide is also available in **Turkish, German, Russian, Arabic, Vietnamese, Romanian, French, Polish and Ukrainian.**

A life-shortening illness is the source of fears and worries that are even difficult to discuss in a person’s mother tongue. Seriously ill persons from other cultures often have further questions with their families, for example regarding social law, nutrition, end-of-life care or funeral and mourning rituals.

Many hospice and palliative care facilities therefore also list their culturally specific and linguistic services in the guide.



## OVERVIEW OF THE ONLINE PORTAL

### PALLIATIVE CARE UNITS

**Palliative care units** are specialised units within a hospital for the care of people with a progressive, life-shortening illness. The aim is to alleviate the symptoms as far as possible and improve their quality of life so that seriously ill patients can spend their remaining time in familiar surroundings as far as possible. If the patient cannot be discharged and sent home, the multi-professional team from the palliative care unit are there to support the patient and their relatives.

*Teams including professionals with diverse skills and qualifications alleviate the most severe symptoms*

### INPATIENT HOSPICES

**Inpatient hospices** focus on people with an advanced, life-shortening illness: the full-time and voluntary staff in the residential facilities care for and look after the seriously ill according to their personal needs, take time for the relatives and work closely with (general) practitioners experienced in palliative medicine.

*If it is no longer possible to live at home: hospice care*

WHAT ARE YOU LOOKING FOR? WHO ARE YOU LOOKING FOR?

Palliative care units

Name of institution

WHERE ARE YOU LOOKING?

WITHIN

Leipzig

20 km

SEARCH

*Specialist care services  
committed to a life  
with dignity*

### PALLIATIVE CARE SERVICES

Outpatient **palliative care services** are available to seriously ill people in their familiar environment: specially trained nurses care for and accompany palliative patients in close cooperation with hospice services and other local providers. In this way, they also support and relieve the burden on relatives.

### OUTPATIENT HOSPICE SERVICES

Many people volunteer in outpatient hospice services to support the seriously ill and their relatives at home. They offer advice on questions related to outpatient care, work together with doctors and nursing services and accompany the family in the period of death and mourning.

*Volunteers  
accompany seriously  
ill people and their relatives*

### PALLIATIVE CARE DOCTORS

**Doctors** with an additional qualification in palliative medicine alleviate stressful symptoms such as pain, anxiety, shortness of breath, restlessness, nausea, etc. with the aim of achieving the best possible quality of life for the seriously ill person and their family.

*Palliative medicine  
alleviates symptoms  
and enhances quality of life*

*Early counselling  
and support in hospital*

### HOSPITAL PALLIATIVE CARE SERVICES

A **palliative care service** is made up of a specialised team with different professional staff, offering palliative care for patients on all wards of a hospital. Care includes both continuous and early palliative care counselling and complementary co-treatment in case of complex symptoms and needs.

### SAPV TEAMS

**Specialised outpatient palliative care (SAPV)** aims to maintain quality of life and self-determination for people with an advanced, life-limiting illness as far as possible. SAPV teams come to the seriously ill wherever they need them, whether at home, in a hospice or, for example, in care or integration facilities. The 24-hour availability of the SAPV teams seven days a week and the networked activity in palliative care are indispensable.

*Available seven days  
a week and  
24 hours a day*

WWW.WEGWEISER-HOSPIZ-  
PALLIATIVMEDIZIN.DE